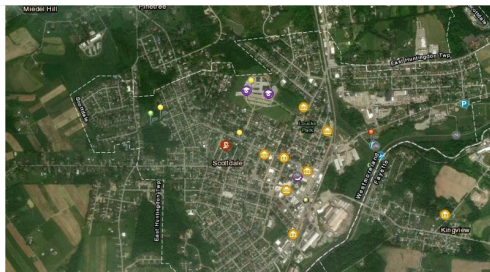




## SMITHTON AND SCOTTDALE



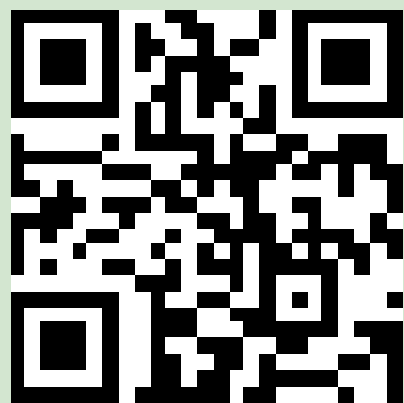
*Provide your input...*

### COMMUNITY SURVEY AND INTERACTIVE MAP PROGRAM

#### WHERE

Links to the **Survey** and **Map** are available on the Smithton ([www.smithtonboro.us](http://www.smithtonboro.us)) and Scottsdale ([www.scottdaleborough.com](http://www.scottdaleborough.com)) municipal websites.

You can also link to the Survey from your Smartphone using this QR code:



*We thank you for your input!*

#### WHAT

Smithton and Scottdale are developing an Active Transportation Plan to make walking, biking and other modes of active transportation in our communities safer, easier and more accessible for everyone. Active Transportation is defined as any type of transportation that is self-propelled like walking, biking and using a wheelchair; or is non-motorized like kayaking or horse-riding.

#### TOPICS

An **on-line Community Survey and Interactive Map Program** have been created to gain input from the residents of Scottdale, Smithton and the neighboring communities. We want to know about the biking and walking enhancements, safety and access improvements and connections to existing trails, waterways, greenspaces and other community destinations that you would like to see in our communities.